

Peter Grasch

Email peter@grasch.net
Phone +33 7 88 69 50 98
Address 92 rue de Rochechouart
75009 Paris, France

Relevant Skills

Software Engineering	C / C++	Bash	Speech Recognition
Algorithm Design	Qt, KDE Frameworks	Ruby	NLP
Problem Solving	Java	GNU/Linux	Recommender Sys.
Team Management	Python	MS Windows	User Interfaces

Education

- 2012 - 2015 **Master of Science in Computer Science at Graz University of Technology**
Selected specializations: [Algorithms](#) and [Software Technology](#).
[Graduated with Highest Honors](#).
Notable publications: P. Grasch, A. Felfernig, and F. Reinfrank. [ReComment: Towards Critiquing-based Recommendation with Speech Interaction](#), 7th ACM Conference on Recommender Systems (RecSys 2013), Hong Kong, China, 2013
P. Grasch, and A. Felfernig. [On the Importance of Subtext in Recommender Systems](#). *icom*, 14(1):41-52, 2015.
Thesis: [Speech-based Recommender Systems](#).
- 2013 **ISEP Exchange Student at Yonsei University, Seoul, Korea**
Immersion in such a vastly different, but incredibly interesting culture allowed for substantial [personal growth](#). Completed courses included [Graph Theory](#), [Artificial Intelligence](#), [Knowledge-Based Systems](#) and [Analysis of Algorithms](#). (GPA: 4.3)
- 2009 - 2012 **Bachelor of Science in Computer Science at Graz University of Technology**
Coursework included a solid [mathematical foundation](#), [problem solving capabilities](#) and advanced [software engineering](#) courses using a variety of languages including [C](#), [C++](#), [Java](#) and [Prolog](#).
Thesis: Practical Applications of Context-Aware Computing: A Software Engineering Perspective.
- 2002 - 2007 **Federal Higher Technical Institute HTBLA Kaindorf**
Fundamentals of [software engineering](#), [network administration](#) (CCNA), [system administration](#) (MCP) and [project management](#); Graduation with highest honors.

Selected Professional Experience

- since 2015 **Software Development Engineer at Apple**
At Apple, I am working on [Siri](#), helping to bring state of the art [natural language processing](#) to millions of customers.
- 2014 - 2015 **Speech Processing Consultant at Radix Direct GmbH**
Activities include [acoustic modelling](#) and [audio alignment](#) of usually sparse corpora and automatic data acquisition.

Selected Professional Experience (continued)

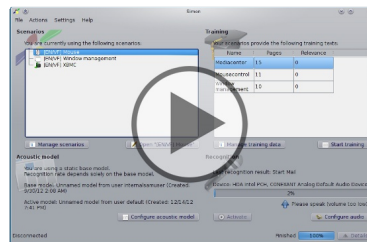
2006 - 2015 Development and maintenance of the open source speech recognition solution Simon

Written in C++ using Qt4 and KDE4.

Responsibilities also included [release management](#) and [team coordination](#) in a large and diverse environment.

Representing Simon at multiple conferences such as Akademy 2010, 2012, 2013, Desktop Summit 2011, AAL Forum 2010 and CeBIT

2011 provided the opportunity to hone [communication](#) and [presentation skills](#) as well as build and [cultivate international relations](#).



<http://youtu.be/ghfMMYNOWxo>

2012 - 2015 Independent ASR Consulting

Speech recognition related consulting, including [contract work](#) and [workshops](#) for various clients around the world.

2011 - 2014 Google Summer of Code Mentor for KDE

Mentored five students on as many projects for KDE and represented the organization at Google's annual [Mentor Summit](#) in 2011.

2014 Mentor at Facebook's Open Academy

Mentored a team of three students from the University of Texas at Austin, working towards a [Natural Language Dialog Manager](#) for Simon.

2010 - 2012 Development of the speech recognition and infrastructure for the EU project ASTROMOBILE

18 month ECHORD research project in cooperation with Sant'Anna School of Advanced Studies; Designed and implemented [D-Bus](#) based, service-oriented communication framework, touch-friendly and voice controllable [QML](#) front-end.



http://youtu.be/2ZxWOmP_4D8

2010 - 2012 Lead programmer at the national Benefit project: Speech recognition for elderly people

Highly innovative, fast-paced and demanding work environment with tight deadlines.

2009 - 2010 Network design, setup and system administration at Klein GesmbH

Responsible for 15 workstations and multiple servers running both [GNU/Linux](#) and [Microsoft Windows](#).

References



grasch.net



goo.gl/4ar20S



goo.gl/cMzPQs



simon.kde.org



github.com/bedahr